

The Lord gave the Instruction. Matthew 25:37-40. "If you have done it to the least of one of these, you've done it unto me." Care for the lost and the least among us.

The Lord explained the Inspiration. 2 Corinthians 1:4 "Comfort others with the comfort you've received." Minister to others out of your own experience and God's loving response to your crises.

CRISIS RESPONDER BASIC: As a CRB you will be qualified to work alongside our Chaplains and Crisis Responder Advanced personnel in the field or wherever help is required. Your role will be to offer assistance needed while supporting the other members of the team.

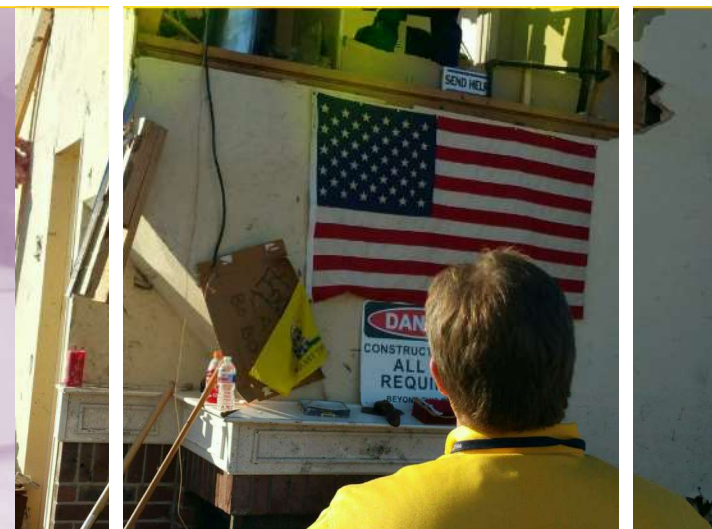
CRISIS RESPONDER ADVANCED: Upon completing 16 hours of basic training you will be qualified to reach out to victims in all kinds of situations to help them through the grief and trauma they are experiencing by providing emotional and spiritual support, as needed. Additional training will further hone your skills to better your ability to help those in need.

CHAPLAIN: With the exception of death notifications, CRM training for Chaplains is the same as for Crisis Responder Advanced. The difference lies in the religious background and qualifications. Chaplains must be ordained or licensed pastors or possess a Chaplain's certification from a recognized chaplaincy group. Alternately, an individual may be designated a Chaplain by being licensed or commissioned by their church or be an ordained deacon, elder or hold their denomination's equivalent. Stephen Ministry training also qualifies.



Crisis Response Ministry

Crisis Response Ministry
4101 Green Oaks Blvd.
#305-223
Arlington, TX 76016
469-212-7634
www.crmtx.org



Bringing Christ to the Crisis



Love is not something you feel, it's something you do. God's love is always accompanied by an action.

“God so loved the world that He gave...”

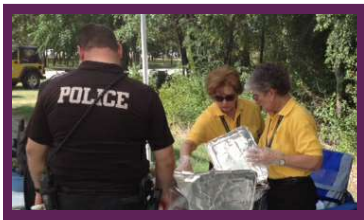
Jesus taught us how to love and serve others.



Introduction to Our Ministry

Crisis Response Ministry is a non-profit organization. Our primary mission is taken from 2 Corinthians 1:4, *“Comfort others with the comfort you have received.”* CRM's guiding philosophy is ministering to people out of compassion and to provide a genuine demonstration of God's love and mercy.

Crisis Response Ministry deploys crisis trained Christian volunteers. The organization is developing partnerships with Law Enforcement, Fire Departments, Offices of Emergency Management, Department of Homeland Security and other agencies.



Emotional & Spiritual Care

Objectives

1. To deploy a group of crisis trained Christian volunteers.
2. Organize the local faith-based community to improve the response to those in crisis.
3. Create collaboration/coordination alliances with other crisis focused volunteer organizations, such as: Red Cross; Salvation Army; Catholic Charities; National, State and Local VOAD groups; Mercy Corps; and other agencies that will further the ministry's mission.
4. Form partnerships with law enforcement agencies, fire departments, offices of emergency management, and homeland security to provide access to geographical areas and people in crisis.
5. During a major multi-casualty incident, the ministry's trained volunteers will serve as a force multiplier for Law Enforcement, Fire Departments, Offices of Emergency Management, and Department of Homeland Security in providing emotional and spiritual care.

